

HI-LO CHAIR ADJUSTABLE BED MANUAL




Avante
INSPIRED LIFESTYLE

TABLE OF CONTENTS

Safety	1
Introduction	3
Care	4
Features	5
Unpacking Your Base	7
Attaching Legs	8
Attaching Side Rails	9
Attaching Headboard	10
Hand Control Overview	11
Troubleshooting	12
Product Guarantee	13
Notes	14

SAFETY

ATTENTION: Important Safety Disclaimers
Read all instructions before using
your adjustable base. Save these instructions.

WARNING

Always unplug the base from electrical outlet before servicing any part of the base. Unplug the base before cleaning. To safely disconnect, ensure base is in a flat position with all motors off.

TO REDUCE THE RISK OF SHOCK, FIRE OR INJURY: For optimal safety and operation, plug the bed base into a surge protector (not included). Ensure to always unplug the base from the electrical outlet before servicing or cleaning any part of the base. Keep the power cord away from heated surfaces. Discontinue use of the bed base and contact a qualified service centre if it has a damaged cord or plug, if it is not working properly, or it has been dropped into water. Only use this bed base for its intended use as described in this manual. Do not use accessories/attachments that are not recommended by the manufacturer. Improper connection of the equipment can result in the risk of electrical shock, electrical fire or fault if the plug does not fit your outlet. Contact a qualified electrician to install a suitable outlet.

ENTRAPMENT WARNING: During the operation of the bed, gaps are created. A child, person's limb or pets can be entrapped during use and when base is in raised position. Always keep gap areas clear and keep limbs on top of the base. Failure to follow this warning could result in serious injury or death.

PETS AND CHILDREN: Dispose of all packing materials immediately after opening as it may pose a risk to small children and pets. To avoid injury, it is not advised to allow children and small pets to play under the bed. Children should not operate the bed base without adult supervision.

PACE MAKER WARNING: This product produces a vibration sensation. It is possible an individual with pacemakers may experience a sensation similar to exercise. Consult your physician for information as to how this may affect you.

SAFETY

- To reduce the risk of falls on height adjustable bases, the base should always be in its lowest position for sleeping and resting. The highest position should only be used for carer's access to the user, ease of entry and exit of bed for the user and ease of making the bed.
- A minimum of 2 able and fit adults should be present when lifting or moving the bed. It is recommended to use trolleys or other lifting/moving devices where possible.
- Careless use of naked flames, cigarettes or other heat sources could set fire to this product.
- Do not operate whilst any person is under the base whilst raising/lowering or adjusting the bed.
- Care should be taken that no body parts are in or near the adjustable frame while operating.
- Ensure the cabling of the bed is free from the mechanism.
- Don't run over electrical cables when moving the bed.
- Do not manipulate or conduct electrical maintenance on the motors or any of the beds electrical components or cables. Any electrical work must be facilitated by a qualified tradesperson.

WARNING

- Stay clear of moving parts while in motion.
- Before adjusting, make sure children and pets are clear of moving parts and are not under bed base.
- Do not allow children to operate bed base without adult supervision.

INTRODUCTION

Congratulations on the purchase of your new **AVANTE HI-LO CHAIR ADJUSTABLE BED**

The Hi-Lo Chair bed has been expertly designed to make getting into and out of bed easier. With vibration massage motors and Cool Balance mattress this product is a revolutionary leap forward in intelligent design.



Key Features:

- Hi-Lo Lift Function
- Easy-Up Functionality
- Head and Foot Adjustability
- Attached Side Grab Rails
- Cool Gel Infused Mattress
- Vibration Massage Functions
- Wired Hand Control which is Backlit
- 200kg Weight Rated

CARE

GENERAL CARE INSTRUCTIONS

- Legs and castors should be checked for tightness regularly.
- When transporting - do not over tighten when restraining.
- Do not exceed the maximum weight limit for this bed (200kg total).
- Do not jump on or abuse the bed.
- Do not constantly push the buttons on the controller when not for intended use.
- Use the controller only for adjusting the bed frame for intended use - not for entertainment.
- Lubricate moving parts using a non-corrosive lubricant every 6 months or as required. Avante recommends the use of INOX.
- Beds should be positioned with clearance from walls and objects so as not to cause damage.
- Do not rock or tilt the frame.

FEATURES

PRODUCT FEATURES

- Stylish modern living design
- Adjustable head and foot parts
- Chair and lift position to assist getting on and off bed
- Head and foot massage function
- Wired remote control with LED backlighting
- Fixed side grab rails for extra support
- Includes cool gel infused mattress



FRAME DESIGN FEATURES

- Low voltage, DC lift system provides smooth and efficient operation
- Long lasting steel support
- Superior steel foundation
- Powder coated steel
- Designed to lift up to 200kg total weight
- Gravity fall motors
- Wall aligned technology.

UNPACKING YOUR BASE

1. Open both boxes (bed base and headboard) and remove protective plastic.



UNPACKING YOUR BASE

3. Locate box of parts and side rails, cutting the zip ties and removing the protective plastic.



4. Locate hand controller, cutting the zip tie and removing the protective plastic.



ASSEMBLING - ATTACHING LEGS

1. Flip the bed carefully on its side.
2. Locate box of legs and screw in to each corner of the bed base.
3. Once completed, flip bed carefully back to a flat position.



ASSEMBLING - SIDE RAILS

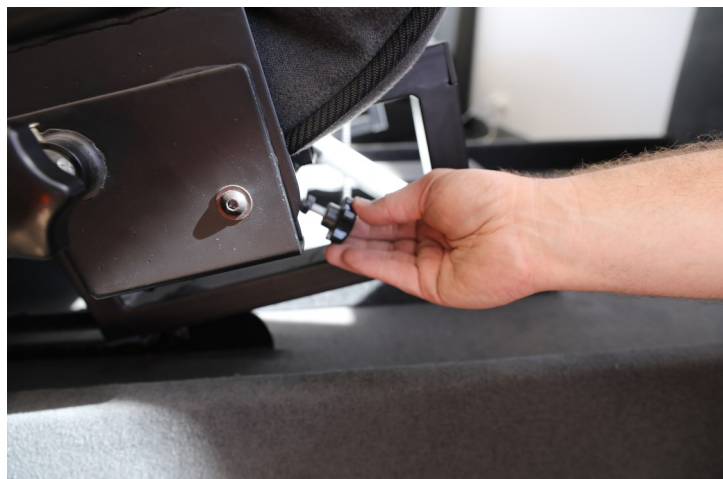
1. With the bed in an upright position, locate the side rails and line up with holes as shown.



2. Push the two prongs into the holes, pushing against the mattress as shown.

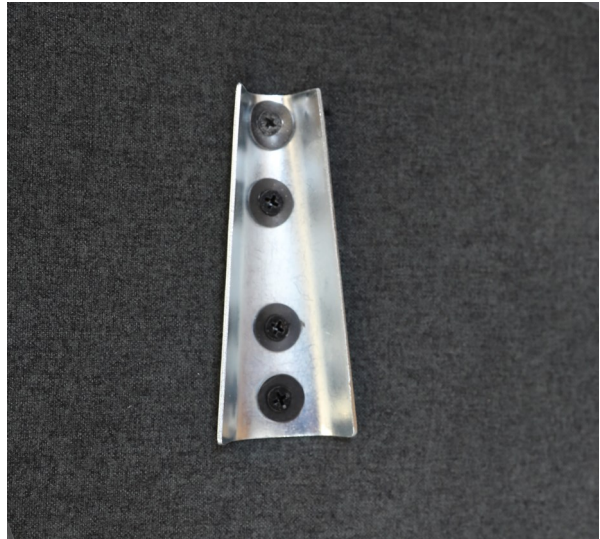


3. Locate the bolt as shown and fasten until as tight as possible.



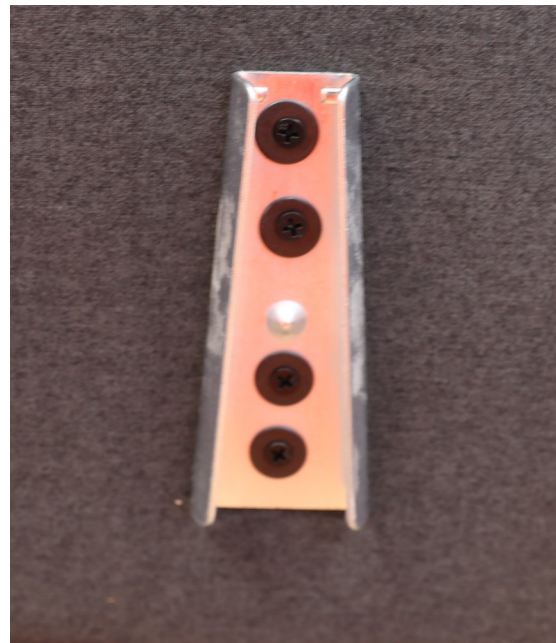
ASSEMBLING - ATTACHING THE HEADBOARD

1. Locate bracket slot at the bottom of the headboard.



2. Find the same matching bracket slot at the top of the bed base.

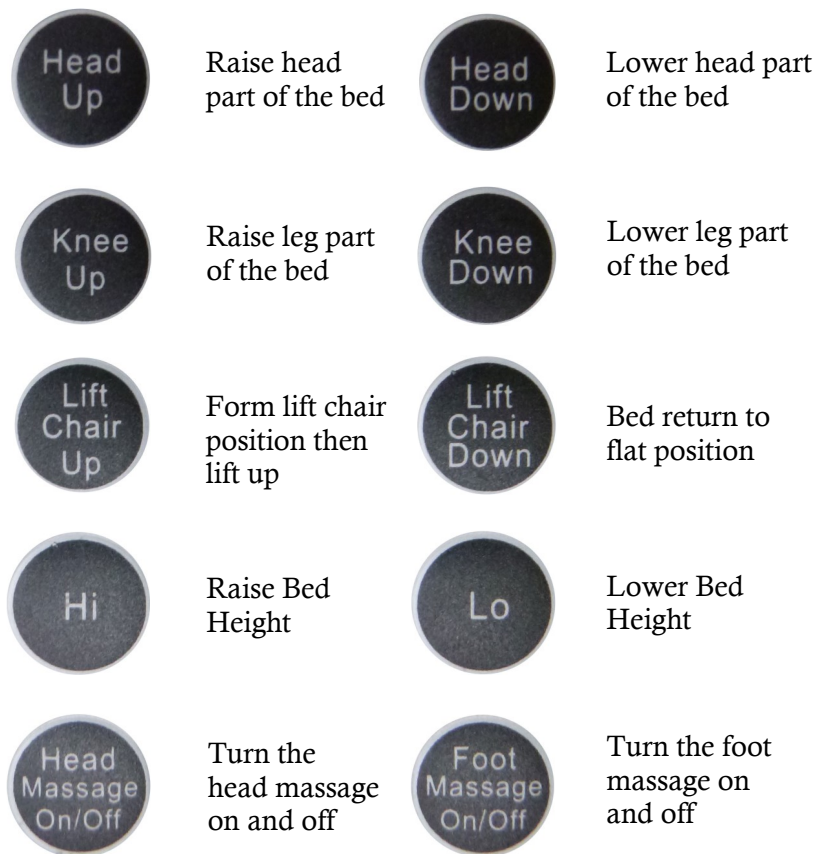
3. Slide the headboard brackets into the top of the bed base to secure the headboard.



HAND CONTROL OVERVIEW

Ensure the remote is plugged into the control box underneath the bed. The remote should look like the one to the right.

Please refer to the following diagram explaining the functions.



Hand Control Calibration

When first connecting your chair bed to power, you will need to continuously press the **lift chair down** button to calibrate the control box. The bed's foot part will raise up then go down. Once completed, the bed will be ready to use. The re-calibration is required in the event of power black out, or power has been turned off to the bed.

TROUBLESHOOTING

Below is a list of possible problems & their solutions should the adjustable base fail to operate properly

PROBLEM	SOLUTION
The base does not respond when the remote is used. Remote LED illuminates and appears to be normal.	Perform any or all of the following: <ul style="list-style-type: none">• Check that the power cord is plugged into a working & grounded electrical outlet.• Check that the light on the transformer is on.• Check the home's circuit breaker & fuses.• Unplug the power cord from the outlet. After one minute, plug it back in. Press chair down button.
The remote does not work or does not light up.	<ul style="list-style-type: none">• Check the remote LED light is lighting up when pressed. If not, please check that the power cord is plugged into a working & grounded electrical outlet.
Base stutters while in motion.	<ul style="list-style-type: none">• Clear any clutter or obstructions under and around the adjustable base.• Ensure the buttons on the remote are being pressed firmly down when operating the Head & Foot functions.

*If you have followed the instructions outlined in this manual, and your problem is persisting, please contact the **retailer** you originally purchased your bed from or **Avante Australia** for further assistance.*

PRODUCT GUARANTEE

Congratulations on your purchase. Avante Australia is an International Brand that uses technology, production facilities and teams with over 20 years' experience.

Our goods come with guarantees that cannot be excluded under the Australian Consumer Law. You are entitled to a replacement or refund for a major failure and for compensation for any other reasonably foreseeable loss or damage. You are also entitled to have the goods repaired or replaced if the goods fail to be of acceptable quality and the failure does not amount to a major failure.

Avante Australia proudly provides a full guarantee (10 years—applies to frame, structure & electric motors only. All other electronic components & upholstery are covered for 2 years). Please refer to www.avante.com.au for details against faulty workmanship and/or faulty materials. During the guarantee period, if we are satisfied there is a genuine fault, we will repair or replace the product if it's an option.

THE GUARANTEE DOES NOT EXTEND TO THE FOLLOWING:

- Fabric (including stains, soiling, burns and normal wear).
- Items upon inspection that are deemed unsanitary.
- Normal wear and tear, or damage caused by abuse.
- Clearance bedding sold in 'as is' condition.
- Failure to comply with manufacturer care and maintenance instructions.

IN ORDER FOR THIS GUARANTEE TO BE VALID YOU MUST:

- Be the original purchaser.
- Provide a copy of the original store receipt.
- Not misuse the product (refer to care and maintenance and safety sections).

PRODUCT GUARANTEE

PLEASE TAKE CARE OF YOUR HI-LO CHAIR BED BY TAKING THE FOLLOWING PRECAUTIONS:

- Legs and castors should be checked for tightness regularly.
- When transporting - do not over tighten when restraining.
- Maximum recommended weight limits; on a High Low Lift bed 200kg.
- Do not jump on or abuse the bed.
- Do not constantly push the buttons on the controller when not for intended use.
- Use the controller only for adjusting the bed frame for intended use - not for entertainment.
- Lubricate moving parts using a non-corrosive lubricant every 6 months or as required. Avante recommends the use of INOX.
- Beds should be positioned with clearance from walls and other objects so as not to cause damage.

We will not cover damage caused by neglect, mistreatment or general wear and tear of the bed. Regular maintenance is required.

MAKING A CLAIM

To make a claim under this Guarantee please contact your bedding retailer who will initiate the claim process with us. If this cannot be done, please contact Avante Australia Pty Ltd directly via the details on the back of this manual.

Avante Australia will require photos of Mattress and Base support system to be sent at the time of a claim being made. For details of how to take acceptable photos please contact Avante Australia (contact details on back page).

NOTES

NOTES



Avante Australia Pty Ltd
Unit 2, 29-71 Saltwater Circuit
Narangba, QLD 4504
Phone: 07 3284 3133
Fax: 07 3284 3199
www.avante.com.au